

Part no.	315-4235500-XXX
Product name	簡易使用指南/GlucoRx Cow (DIME)/英
Spec	L135*W360mm/2折/銅版紙100P/Pantone647C/單面
Designer	Tsaiyi
Color	 Pantone 647 C

Glucorx

COW

Ketone Meter (TD-4235E)



Quick Start User Guide

Distributed by
Glucorx Ltd
4 Wintonlea, Monument Way West
Woking, Surrey, GU21 5EN, UK
Website: www.glucorx.co.uk
Customer careline: 01483 755133

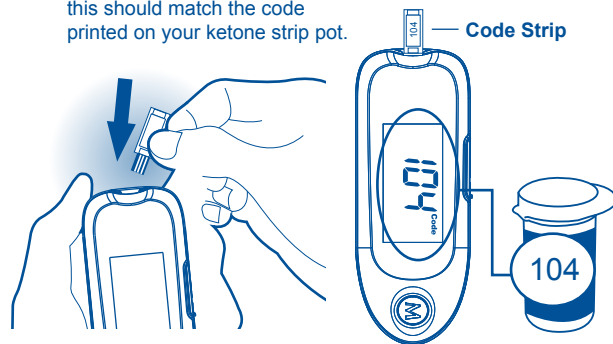
TaiDoc Technology Corporation
B1-7F, No. 127, Wugong 2nd Rd.,
Wugu Dist., 24888 New Taipei City, Taiwan



1

Before testing, insert the **Code Strip** to turn on your meter for calibration. Wait until the code number appears on the display; this should match the code printed on your ketone strip pot.

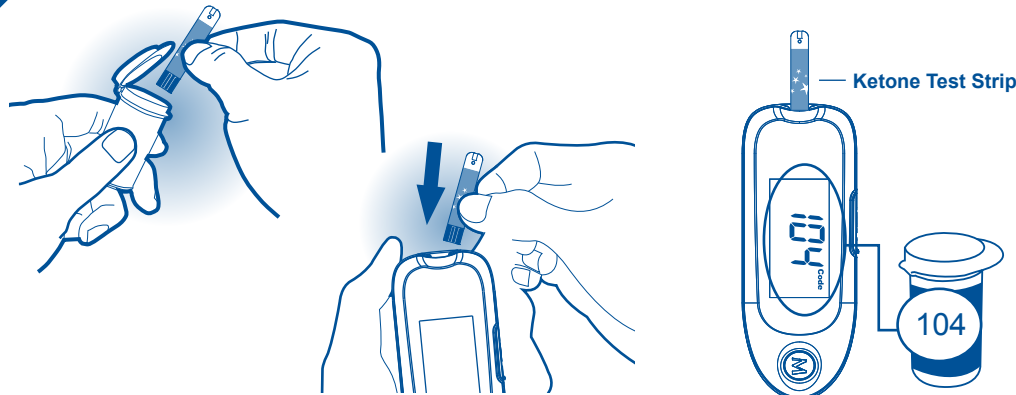
The code used in this guide is an example only; your meter may display a different code.



2

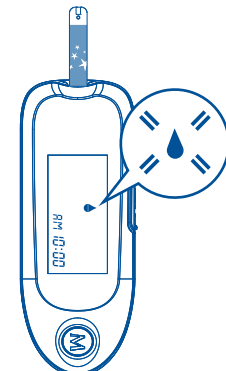
Take a **Ketone Test Strip** out and then insert it to turn on your meter.

The code displayed should still match the code printed on your ketone strip pot.



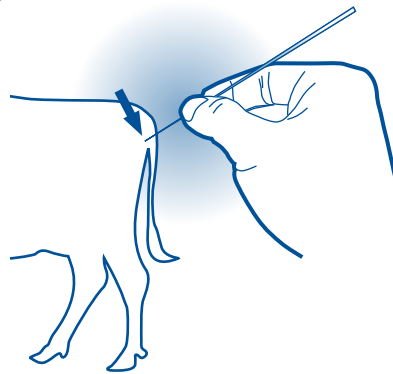
3

A flashing "Blood drop symbol" will display on the meter.



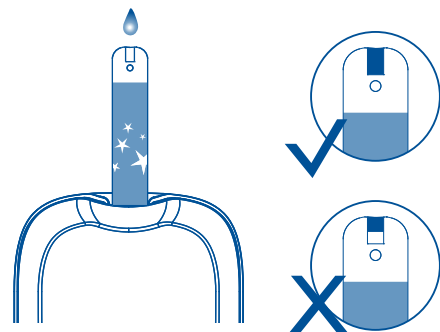
4

Draw blood sample from the root-tail.



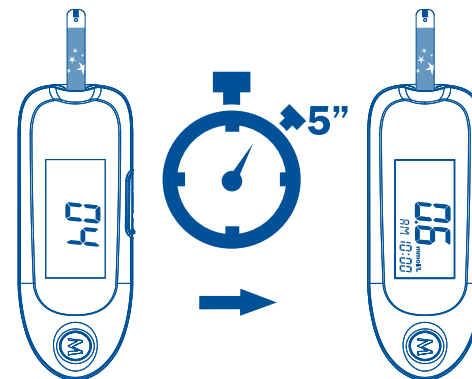
5

Apply blood sample (0.7µL) until the confirmation window is completely filled.



6

After your meter counts down to 0, the test result will display on screen.



7

Dispose the used test strip carefully.

