
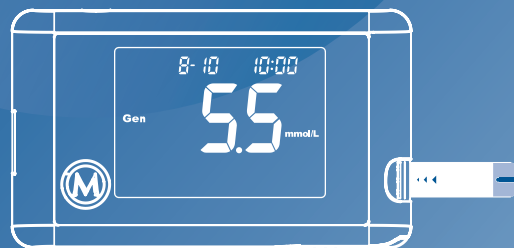


Part no.	315-4239300-XXX
Product name	簡易使用指南/GlucoRx Vet/英
Spec	L148*W420mm/2折/銅版紙100P/雙Pantone647C
Designer	JF
Color	 Pantone 647 C

Glucorx Vet TD-4268

BLOOD GLUCOSE MONITORING SYSTEM



Quick Start User Guide

Distributed by GlucoRx Ltd.
4 Wintonlea, Monument Way West, Woking,
Surrey, GU21 5EN, UK
Website: www.glucorx.co.uk
Customer careline: 01483 755133

TaiDoc Technology Corporation
B1-7F., No. 127, Wugong 2nd Rd.,
Wugu Dist., New Taipei City 248, Taiwan (R.O.C.)



315-4239300-005

1 Wash and dry your hands before testing.

2 Twist and pull the cap off of the lancing device.

3 Insert a lancet and twist the protective disk off it.

4 Replace the cap of the lancing device.

5 Twist the cap to close it until you hear the click.

6 Select the depth of penetration.

7 Pull the cocking control back until it clicks.

8 Insert the appropriate code strip and make sure the code number on display, code strip, and test strip vial are all the same.

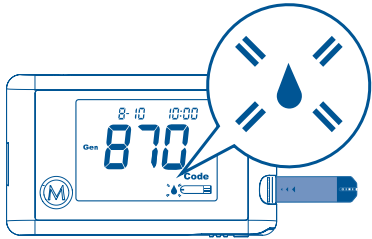
Example only!

Insert a test strip and make sure the code number on display matches the number on your test strip vial.

Example only!

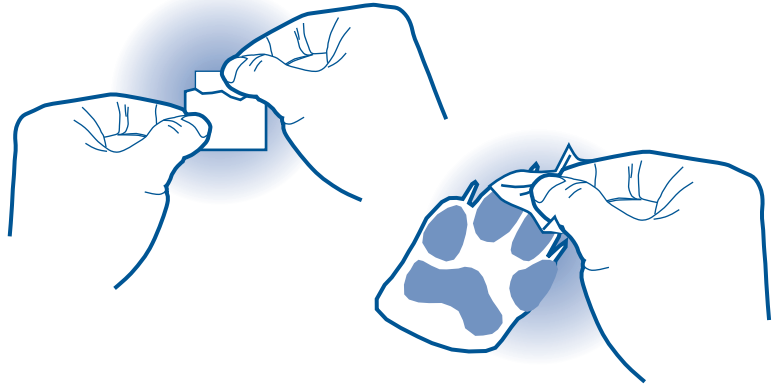
9

A flashing "▲" will display on the meter.



10

Clean the puncture site.



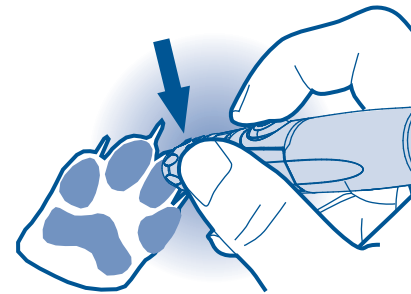
11

Let it air dry.



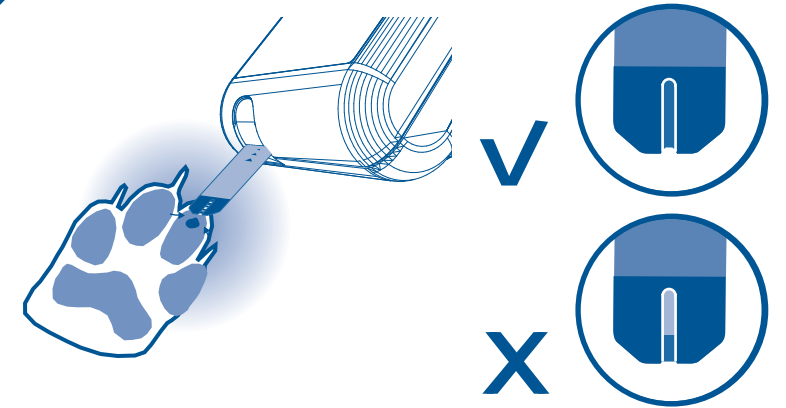
12

Press the release button on the lancing device to obtain a drop of blood.



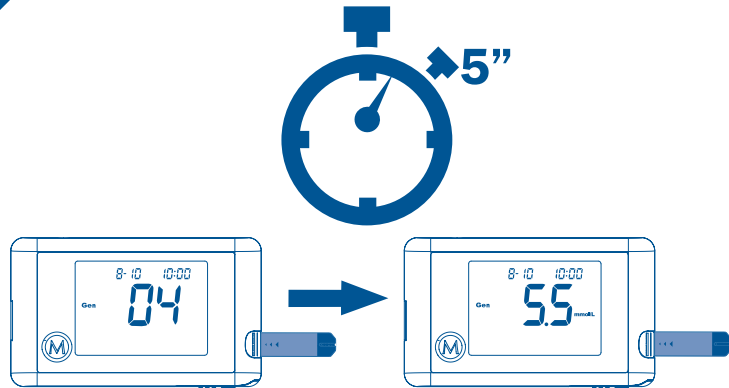
13

Apply your pet's blood sample onto the test strip until the confirmation window is completely filled.



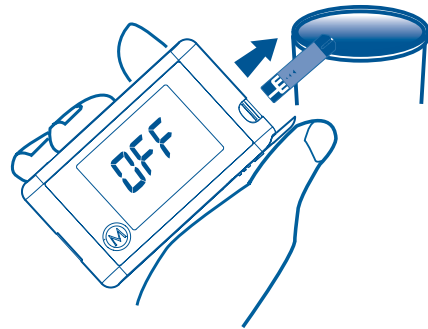
14

After the meter counts down to 0, your pet's blood glucose test result will be displayed on the screen.



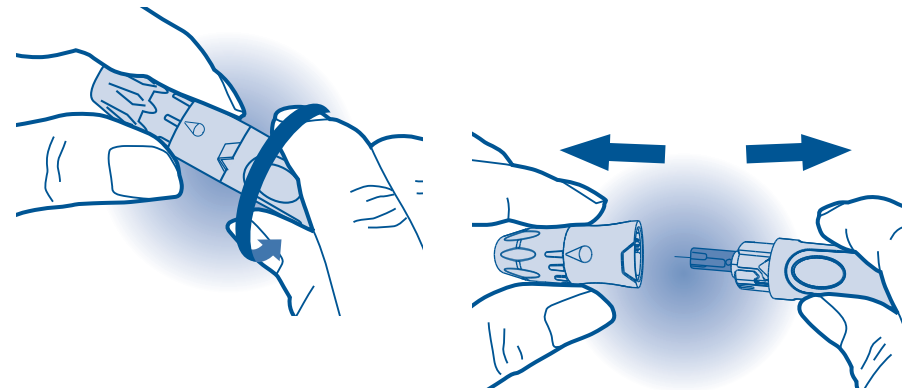
15

Dispose the used test strip carefully.



16

Twist the cap of the lancing device to the left to open it.



17

Dispose the used lancet carefully.

